

Wayne County

Coastal Lakeshore Economy And Resiliency Initiative

Steering Committee
Kick-off Meeting
April 29th 2021



Photo: Port Bay Improvement Association

Agenda

- I. Welcome & Introductions – DOS
- II. CLEAR Overview – DOS
- III. Scope & Schedule – Ramboll
- IV. Public Engagement Plan – Elan
- V. Look & Listen Tour – Ramboll
- VI. Next Steps - Elan

Steering Committee Kick-off Meeting

April 29th 2021



Photo: Port Bay Improvement Association



Welcome & Introductions

Chris Bauer, DOS

CLEAR Steering Committee Members

- **Jason Haremza**, Senior Planner, Genesee Finger Lakes Regional Planning Council
- **Brian Pincelli**, Director, Wayne County Planning Department
- **David McDowell**, Mayor, Village of Sodus Point
- **Lynn Chatfield**, Supervisor, Town of Wolcott
- **Phillip Eygnor**, Supervisor, Town of Huron
- **Frank Robusto**, Supervisor, Town of Ontario
- **Amanda Krenning-Muoio**, Senior Field Advisor, NY Farm Bureau, Region 2
- **Kristy Fowler**, Manager, Pier 53 Fowler Marinas and restaurant
- **Lindsey Gerstenslager**, District Manager, Wayne County Soil & Water Conservation District
- **Tom Hart**, Eastern Lake Ontario Dunes Coalition
- **David Klein**, Senior Field Representative, The Nature Conservancy

Project Team

Consultant Team



NYS

NYS Department of State (DOS)

NYS Dept. of Environmental Conservation (DEC)

An aerial photograph of a large body of water, likely a lake or bay. A prominent feature is a long, narrow, sandy barrier bar that runs diagonally from the bottom right towards the center. A dense line of green trees follows the inner curve of this bar, separating the shallow, light-colored water of the bay from the deeper, darker blue water of the lake. Several small islands and peninsulas are visible in the background, some with buildings and more trees. A few small boats are scattered across the water. The sky is clear and blue.

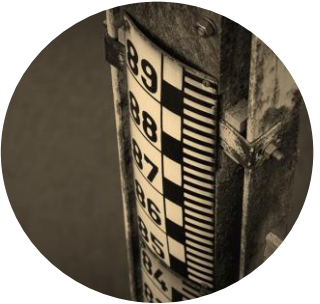
CLEAR initiative overview

Chris Bauer, DOS

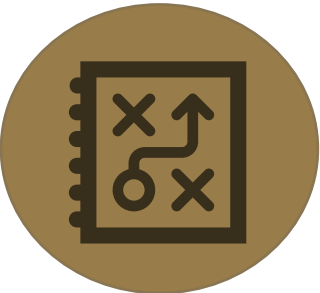
CLEAR Planning Initiative



An initiative that involves **community engagement** in developing a strategic plan for coastal lakeshore resiliency.



A **forward-looking approach** that addresses current and future extreme water levels.

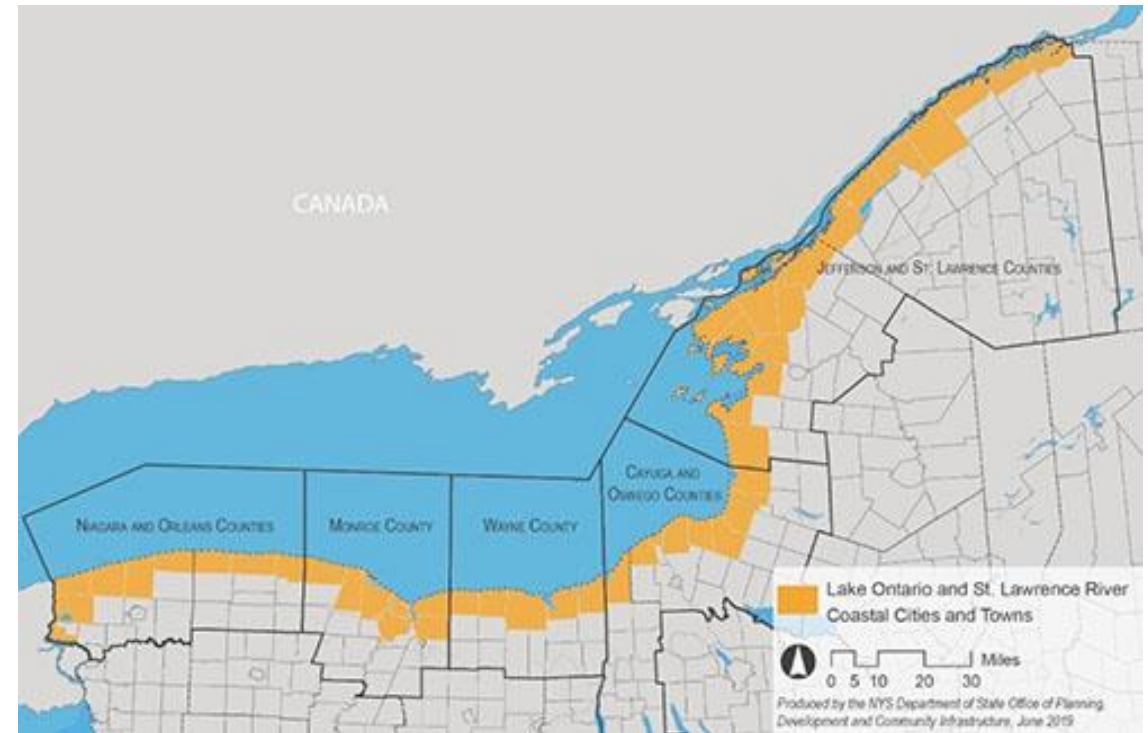


Offers guidance to communities on **resilient options** to rebuild and adapt in the face of changing lake conditions.

CLEAR Regions

The Lake Ontario coastline has been divided into five regions consisting of the following counties:

1. Niagara and Orleans
2. Monroe
3. Wayne
4. Cayuga and Oswego
5. Jefferson and St. Lawrence



CLEAR will address local and regional shoreline and broader resiliency issues in coastal communities and towns.

CLEAR Final Plans

- CLEAR strategies, vision, and goals are designed to **increase long-term resiliency** to future flooding and storm events along with new, more resilient paths for community growth.
- CLEAR plans can be **adopted on the local level** to promote resilient land use through changes to zoning, local ordinances and additional infrastructure.
- Projects or actions identified in CLEAR plans can be **used in conjunction with any existing plans**, such as the Local Waterfront Revitalization Program, to support and meet criteria established under those programs.
- There are no project funds available with the CLEAR initiative. However, having resiliency plans in place will make communities **more competitive when funding opportunities arise**.



Roles and Responsibilities

The CLEAR initiative is a collaborative effort that includes key partners involving a Local Steering Committee, State agency staff and a consultant team:

- **The Steering Committee** is responsible for representing the interests and priorities of the community.
- **State agency staff** will ensure that the process and deliverables are consistent with the goals, priorities and requirements of the Initiative.
- The **State team**, together with the **consultants**, will provide expertise, guidance and technical assistance to develop a strategic long-term plan that will achieve the vision and goals.

All meetings and engagement will be in a virtual format that allows for two-way dialogue. As a team, the consultants and State agency staff will work with the steering committee to attain consensus on decision making.

Roles and Responsibilities

Steering Committee

- Provide guidance and feedback to the consulting team and State planners
- Brainstorm ideas and provide direction to ensure the CLEAR plan reflects local conditions
- Attend monthly steering committee meetings
- Support and participate in community engagement events
- Review reports, designs, and other outputs
- Support their community to pursue more resilient pathways

Roles and Responsibilities

State Team

- Management of consultant team
- Provide guidance for product development
- Facilitation with other state agencies and partners
- Facilitate consistency and knowledge sharing across CLEAR regions

Consultant Team

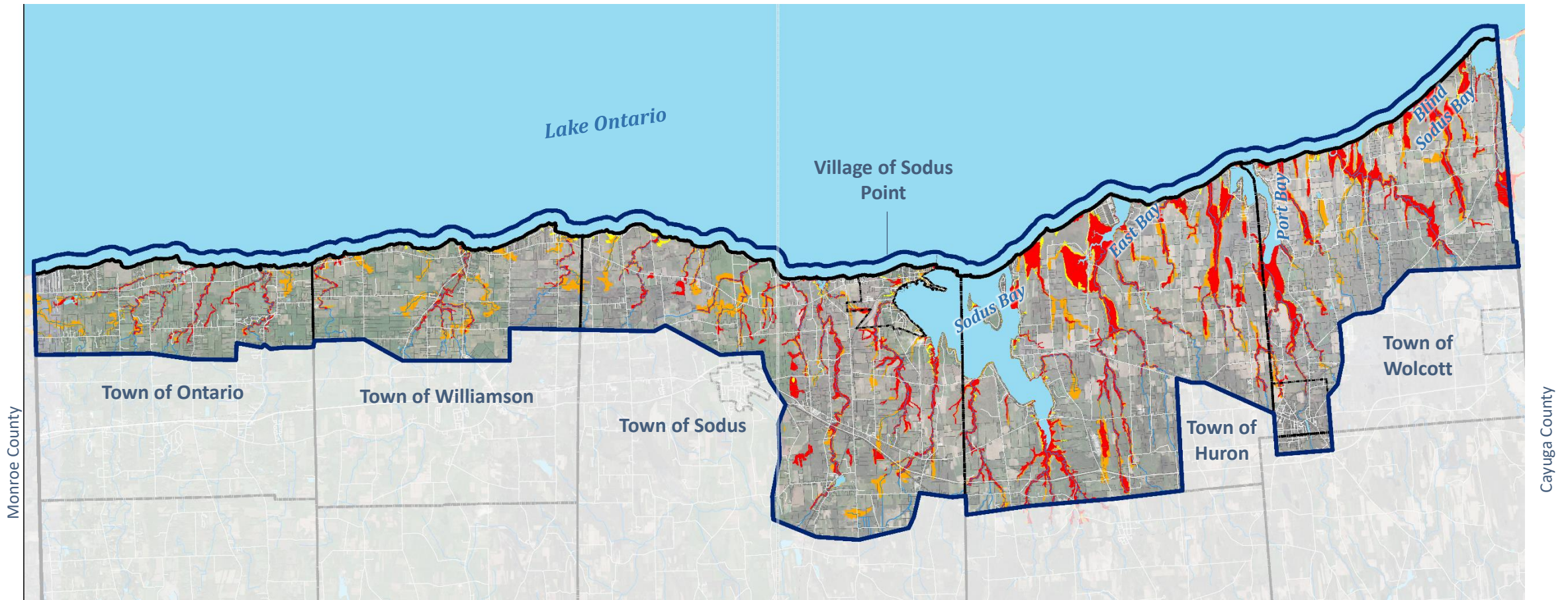
- Facilitation of the CLEAR planning process
- Produce CLEAR materials and outputs with input from the committee and community
- Provide technical expertise and analysis

An aerial photograph of a large body of water, likely a lake or bay. A narrow strip of land, covered in green trees, runs diagonally from the bottom right towards the center. To the right of this strip is a wide, sandy beach. The water is a deep blue-green color. In the background, there are more landmasses and a clear blue sky.

Scope and Schedule

Julie Conroy, Ramboll

Wayne CLEAR Study Area



- Five lakeshore towns and the Village of Sodus Point.
- Study area encompasses risk areas.

CLEAR Milestones

	Spring	Summer	Fall	Winter
Project Initiation/ SC Kick-Off Meeting				
Public Engagement Plan				
Look and Listen Tour				
Community Profile				
Asset Inventory				
Public Event #1				
Risk assessment				
Needs and Opportunities assessment				
Public Event #2				
Long-term Vision and Strategies				
Long-term Projects, Programs, and Actions				
Public Event #3				
Project Profile Development				
Draft CLEAR plan & presentation				
Final CLEAR Plan				
<i>Adopt & Implement</i>				

➤ Look & Listen Tour

➤ 3 public events

➤ ~ Monthly SC meetings

➤ See Public Engagement Plan



An aerial photograph of a large body of water, likely a lake or bay. A prominent feature is a long, narrow, sandy barrier bar that runs diagonally from the center towards the bottom right. A dense line of green trees follows the inner curve of this bar. To the right of the bar, the water is a lighter, milky turquoise color, indicating a sandy bottom. To the left, the water is a deeper blue. In the background, there are more landmasses with trees and some buildings. A small white boat is visible in the lower-left quadrant of the water.

Public Engagement Plan

Laura Lourenco, Elan

Public Engagement Plan

Plan for engaging the community throughout the CLEAR planning process

- Describes (potential) (virtual) activities:
 - Steering Committee meetings
 - Work groups
 - Stakeholder interviews
 - Public Events 1, 2, and 3
 - Public Presentations
- Describes outreach methods, tools, and channels
- Identifies potential CLEAR stakeholders, experts, and partners

Table of Contents:

- I. Roles and Responsibilities
- II. Public and Stakeholder Engagement
- III. Outreach Methods
- IV. Schedule
 - Committee list
 - Media list

Public Engagement Plan

Plan for engaging the community throughout the CLEAR planning process

- Describes (potential) (virtual) activities:
 - Steering Committee meetings
 - Work groups
 - Stakeholder interviews
 - Public Events 1, 2, and 3
 - Public Presentations
- Describes outreach methods, tools, and channels
- Identifies potential CLEAR stakeholders, experts, and partners

Input needed on:

- ← Customizing the structure and type of activities to your community(s)
- ← The best outreach methods & channels including conventional and social media channels
- ← Names of individuals and groups for stakeholder/partner/expert lists
- ← Other feedback or edits
- **Steering Committee Online Survey**



Look and Listen Tour

Jennifer Olivo, Ramboll

Poll question

See Zoom pop-up poll

Look & Listen Tour

Important to inform the:

Draft Asset Inventory

Description of assets in the risk area. Assets are:

- ✓ Part of the built or natural environment.
- ✓ Places or things where economic, environmental, and social functions take place, OR critical infrastructure required to support those functions.
- ✓ Their loss or impairment by a flood/storm event would compromise essential social, economic, or environmental functions and/or critical community facilities.

The asset inventory will help to evaluate risk, impacts, and the effectiveness of potential resilience actions.

&

Community Profile

Profile of shoreline communities:

- ✓ Natural Environment
- ✓ Socioeconomics
- ✓ Land and Water Uses
- ✓ Climate Change Risks

- ✓ Existing conditions
- ✓ Future trends & projections

- ✓ County shoreline level
- ✓ City/Town/Village level

Look & Listen Tour

Virtual (Zoom) tour and discussion of risk areas

- Look: Map tools and imagery
- Listen: Discuss key assets at risk

Thursday May 20th 10:00-11:00



Blind Sodus Bay erosion 2019



Next Steps

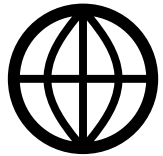
Lisa Nagle, Elan

Next Steps



Steering Committee survey to collect feedback on the draft Public Engagement Plan and at-risk assets in your community

→ <https://www.surveymonkey.com/r/Wayne-SC-CLEAR>



Virtual Look and Listen Tour – Thursday May 20th from 10:00-11:00

→ Come ready to discuss at-risk assets in your community



Steering Committee Meeting #1 – Thursday May 27th from 10:00-11:00

→ draft Community Profile

→ draft Asset Inventory

→ Public Event #1



Thank You
for helping create a more resilient lakeshore!